



Thame Swimming Club Child Safeguarding Policy

Thame Swimming club (affiliated with Swim England) believes that all children involved with the swimming club have the right to stay safe and have fun.

Thame Swimming Club adheres to the principles of safeguarding children as per Swim England Child Safeguarding Policy (Wavepower 2020-2023). This document is a summary of key points highlighted in Wave Power (2020-2023) and must be used in conjunction with the Swim England Child Safeguarding Policy and guidance set out in Wavepower 2020-2023.

[Wavepower 2020-23 | Child safeguarding for Swim England clubs \(swimming.org\)](https://www.swimming.org/wavepower-2020-23-child-safeguarding-for-swim-england-clubs)

Safeguarding children is an integral part of Thame Swimming Club. Thame Swimming Club (TSC) aims to create a culture that provides a safe and happy environment in which children can learn to swim and develop to a level appropriate for their ability and be safeguarded from harm.

Thame Swimming Club Welfare Officer should be notified of all safeguarding and child welfare concerns relating to a swimmer of Thame Swimming Club. The Welfare Office will speak to the Head coach/ other coaching staff and committee members, as appropriate, to ensure the safety and wellbeing of all Thame Swimming Club swimmers. The swimmer's parents will be kept updated of all actions taken.

It is the staff, officers, volunteers, clubs, swim schools, counties and regions who will ensure safeguarding at a local level. It is clear in all government legislation (Children Act 1989/2004 and Working Together to Safeguard Children 2018) that safeguarding children is the responsibility of all, including those who are employed or volunteer with children in whatever capacity.

Key principles

- Swim England is committed to ensuring that all children who take part in our activities can have fun and participate in an environment that keeps them safe from harm.
- The welfare of the child is, and must always be, paramount.
- It is every child's right to be protected from abuse irrespective of their age, gender, faith or religion, culture, ethnicity, sexual orientation, background, economic position, disability or level of ability.
- Allegations of abuse or concerns regarding children will be treated seriously and will be responded to swiftly and appropriately.
- Swim England recognises the responsibilities of the statutory agencies and is committed to complying with safeguarding partners and the statutory guidance Working Together to Safeguard Children (2018)
- Confidentiality will be maintained unless in situations where a child's safety and welfare is compromised. A child's safety and welfare must be the overriding consideration when making decisions on whether or not to share information about them.
- Swim England will support all adults involved in our sports to understand their roles and responsibilities with regards to safeguarding and protecting children in our sports.



- Swim England will provide training and education to all adults involved in our sports to be aware of and understand what best practice is and how to manage any child welfare concerns they identify or are informed of.
- Parents/guardians, children and all participants involved in our sports can access advice and guidance on child welfare matters from the Child Safeguarding Team, Swim England and NSPCC Swimline Child Protection helpline or from the statutory agencies.
- All Swim England organisations must adopt Wavepower and ensure that when they receive new information the manual is updated as appropriate

Useful Contact details

Welfare Officer

Alex Dodd 0778932452 alexhart123@hotmail.com

Buckinghamshire Children Social care (First Response/ MASH)

First Response Team on **01296 383962** between 9am-5pm Monday to Friday.

If you need an urgent response outside of these hours, contact the Emergency Duty Team (EDT) on 0800 999 7677.

Oxfordshire Childrens Social Care

Oxforsdhire MASH **0345 0507666**

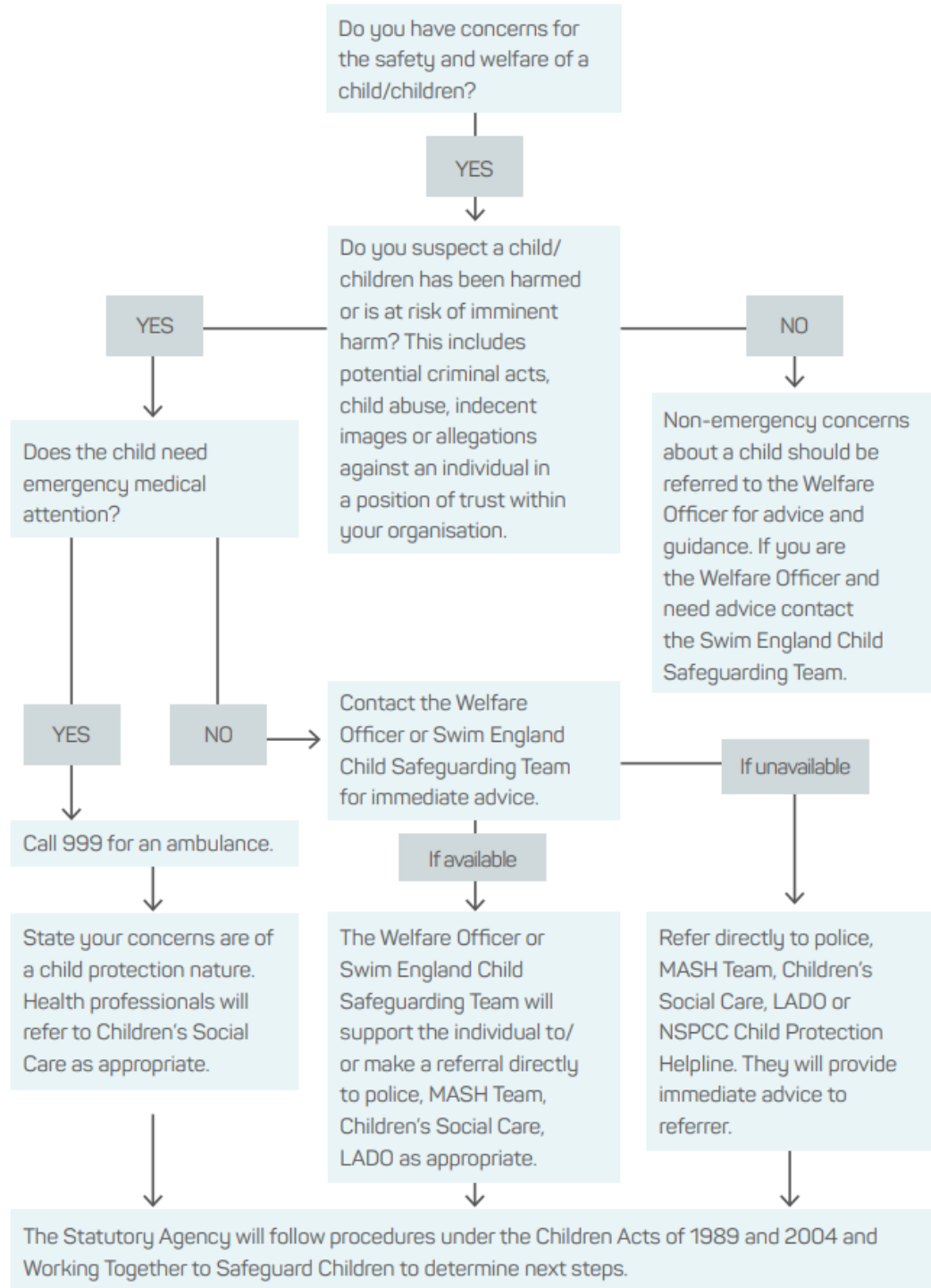
Office hours (8.30-5pm Monday- Thursday, 8.30-4pm Friday)

Outside office hours: Emergency Duty Team **0800 833 408**

Swimline **0808 100 4001**

NSPCC Child Protection Helpline direct on 0808 800 5000. The helpline is open for 24 hours each day and calls are free of charge.

Concerns for a child who is a member of your organisation



In all cases a formal written record of the concern, advice and actions taken should be completed. **The Welfare Officer and Swim England Child Safeguarding Team to be advised if not already done so.**